



SAVE BRONTE

RSL DA has been lodged

Come to our

Important Community Meeting

for all you need to know about it

27th March, 7.30 pm

Clovelly School Hall

Traffic & trucks coming your way

Delivery route past school

High-rise centre on Macpherson St

The WLB-RSL DA for the Bronte RSL site was lodged on 7/3/13. This means that the DA will be assessed under the existing Local Environment Plan not the amended plans endorsed by Council in February. The DA is essentially unchanged from the proposal we saw last year. Now is the time for residents to step up our opposition to a development that, if approved, will essentially change our suburb for the worse forever.

There will be a community information evening at **7.30 pm on Wednesday March 27th in the Clovelly School Hall** (access via Inverness St). We will tell you everything you need to know about the DA including how to lodge an objection to the proposal. Please come to our meeting to learn how, together, we can stop this overdevelopment from proceeding. We want 'Local Shops for Local People'.

Donations needed

In order to give the community the best chance possible to ensure appropriate development occurs at the RSL site, we are employing an Urban Planner to help us prepare our response to the DA. He will establish legal grounds for objections to the DA and prepare a submission for our group. If the developer proceeds to the Land and Environment Court, the planner will assist us in our dealings with the court. The minimum we will have to spend on the planner is \$3700. It will probably be more. We will also probably need to employ a lawyer for any work related to the Land and Environment Court. This legal expertise will be costly.

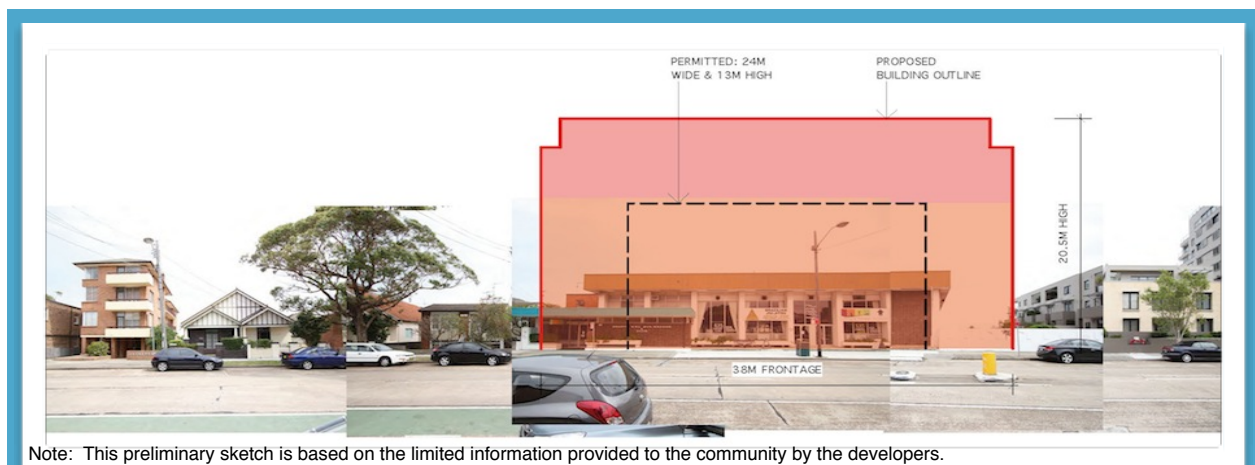
Members of our committee and members of the community have donated to our cause via our bank account but, now that the DA has been lodged, we need more financial support. We cannot continue the fight on behalf of the whole community without it.

Please donate today to the following account:

Account Name: Save Bronte Village

BSB: 082057

Account Number: 146167663



Note: This preliminary sketch is based on the limited information provided to the community by the developers.

The massive size of the proposed WLB development is clearly shown in this diagram. It is at least 2 times (and more likely 3 times) the permitted size.

 Save Bronte

 @savebronte

www.savebronte.com

savebronte@hotmail.com