



Save Bronte speech to Waverley Council regarding the Council planning proposal for the Macpherson and St Thomas Streets Neighbourhood Centre 2013-07-16

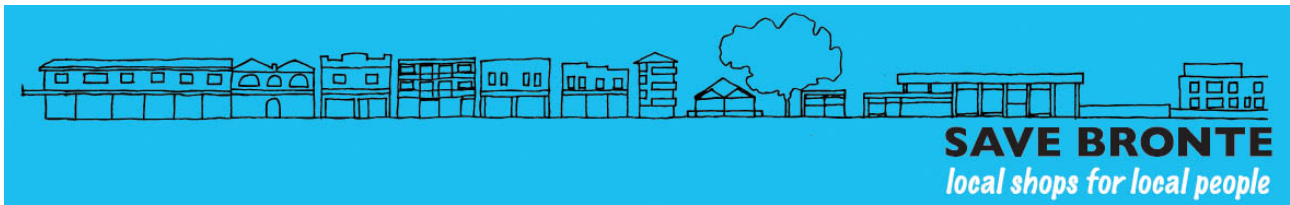
Madam Mayor, Councillors. As you know I speak on behalf of Save Bronte, a community group that is fighting to achieve an appropriate re-development of the RSL site.

Tonight, Save Bronte, on behalf of the community supports the majority of Council's own planning proposal for our neighbourhood centre and we thank Mr Monks and his team for their efforts. However we are asking for you, our Councillors, to make two significant amendments to the proposal. First, the community would like the Bronte RSL site on Macpherson St zoned R3 and second we would like the height limit returned to a 9 or 9.5 metre limit.

At a time when the state government is saying that it wants communities involved in strategic planning the people of waverley, bronte and clovelly have stepped up and taken part. Indeed our community has taken an active and positive part in the conversation about the future character of our neighbourhood centre. We have joined this conversation at the strategic level and we, the community, have presented to Council our clear vision for the future of development in the neighbourhood centre. That vision is 'local shops for local people.' We know that the best way to ensure such appropriate development is for an R3 zoning and a height limit of 9 to 9.5m.

I want to list the ways in which the community has expressed its preference for a predominantly residential with small scale shops development at the RSL site:

Last year we had the council survey that showed 70% of those surveyed wanted no more shops in the neighbourhood centre and that the community's overall vision is for only low rise development.



Save Bronte has held a rally and hosted two community meetings attended by hundreds of locals who were clearly and passionately opposed to large scale development at the site.

We organised two petitions relating to the RSL site with over 1600 signatures calling for residential only development at the site with a height limit of 9 metres and over 2000 signatures calling for development at the RSL site to be governed by the Save Bronte objectives that call for small scale shops appropriate to our existing neighbourhood centre.

And most recently, 86% of submissions to the planning proposal community comment process asked for both an R3 zoning and a 9/9.5 metre height limit at the RSL site.

During this strategic planning process we have seen expert reports telling our community what we want and need. But tonight, I say to you, we don't need experts to tell us what we want and need. We know what we want and need. The message could not be clearer. The community wants the amendments we seek tonight.

The councillors sitting in this chamber, around this very table are an integral and crucial part of our democratic system. You represent the people of waverley. You are elected by us to carry out our wishes and ensure our community's wants and needs are fulfilled. You don't represent outside interests. You don't represent those who seek to profit at our community's expense. It is wrong and a perversion of the democratic process for you to ignore our community on this issue. If you choose to ignore your community on this issue, you will have failed at the most important task with which we have entrusted you, you will have failed to represent your own people. To the community, that will be unforgivable.

Thank you for listening.